

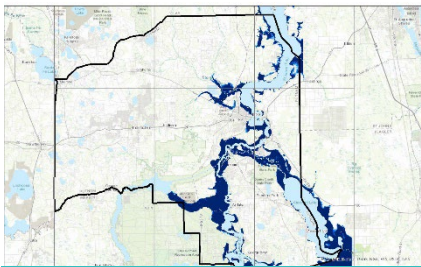


Practice Area

# RESILIENCY

THE KNOWLEDGE YOU NEED, THE INTEGRITY YOU TRUST™

Sea Level Rise and Storm Surge Maps  
Exposure Analysis: Putnam County, Florida



## SERVICES

- Vulnerability Assessments (VA)
- Adaptation and Resiliency Strategy Planning, Sustainable Water Management
- Best Practices in Stormwater & Coastal Modeling and Design Flood Management Expertise
- Highly respected Data Science & GIS Analysis
- Cost-Benefit Analysis and Grant Support for Funding

## IMPLEMENTATION

- Florida's Turnpike Enterprise Resiliency PD&E Pilot
- Numerous VAs in FL, VA, MD
- FDEP Critical Assets Statewide Resilience Dataset
- Monroe County Adaptation Plan
- Mockingbird Lane - Martin County
- US 1 at Canal Street - Volusia County
- SR 72 and SR 70 at Peace River - Desoto County



**Valerie Seidel, M.Comm.** is an accomplished professional and leader in resiliency with 30+ years of experience. She led Florida's first Natural Resource Adaptation Plan in 2011 in Okaloosa and Martin Counties, multiple Vulnerability Assessments ranging from Nassau to Monroe County, and a Statewide Resiliency Strategy. She is well-versed in the complex interactions between Florida's land use patterns and population, regulatory permitting, water resources, and unique environmental issues.  
[VSeidel@balmoralgroup.us](mailto:VSeidel@balmoralgroup.us)



**Jennifer Nunn, P.E., CFM, BC.WRE** is a Board Certified Water Resources Engineer known for developing innovative approaches to evaluating rain-driven vulnerabilities within watershed studies and has designed resilient coastal drainage designs. She has 19 years of experience in stormwater modeling experience and is a Certified Floodplain Manager (CFM).



**Shima Madani, Ph.D.**, has led high-profile Coastal Resiliency Economic Analyses, including Wamberal and Lady Robinson's Beach, integrating sophisticated property value impacts and traditional Cost-Benefit Analysis. She is a respected expert in estimating use and non-use values for environmental benefits and services.

## TBG DIFFERENCE

- Completed Florida's First statewide coastal resiliency analysis
- Data Manager for FDEP Statewide Resiliency GIS dataset
- Florida's First Natural Resources Climate Adaptation Strategy, and Adaptation Strategies in MD, VA and Metropolitan Washington DC